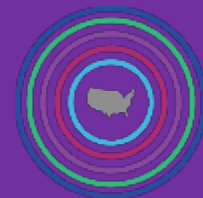




Overview of the Supporting Families LifeCourse Framework

SPIN Conference, April 21, 2018



Supporting Families LifeCourse Framework

Guiding Principles



ALL People



Life Stages and Trajectory



Family Systems and Cycles



Individual and Family Supports



Life Outcomes



Integrated Delivery of Supports



Life Domains



Policy & Systems



Supporting Families LifeCourse Framework

Guiding Principle #1

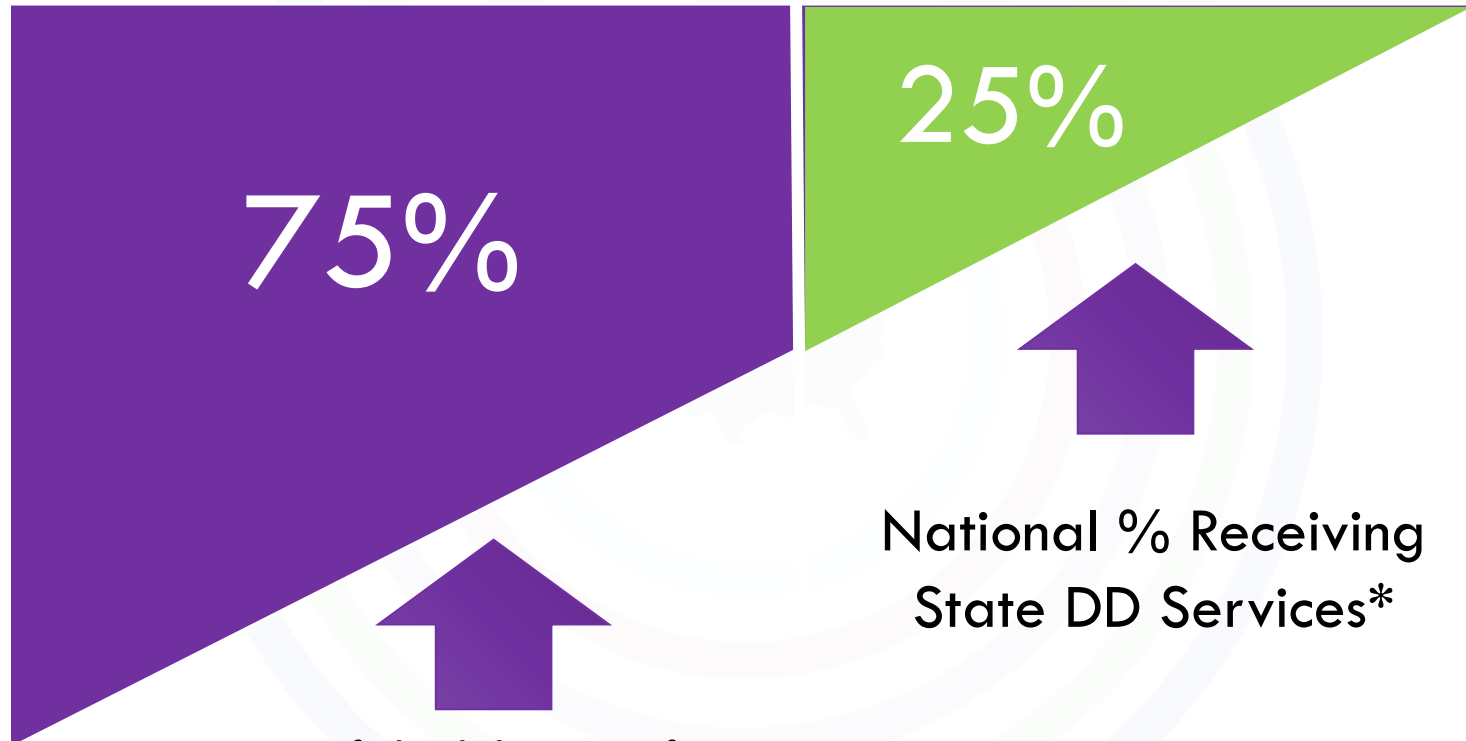


ALL People



National Data

All 4.9 Million people with developmental disabilities



National % Receiving
State DD Services*

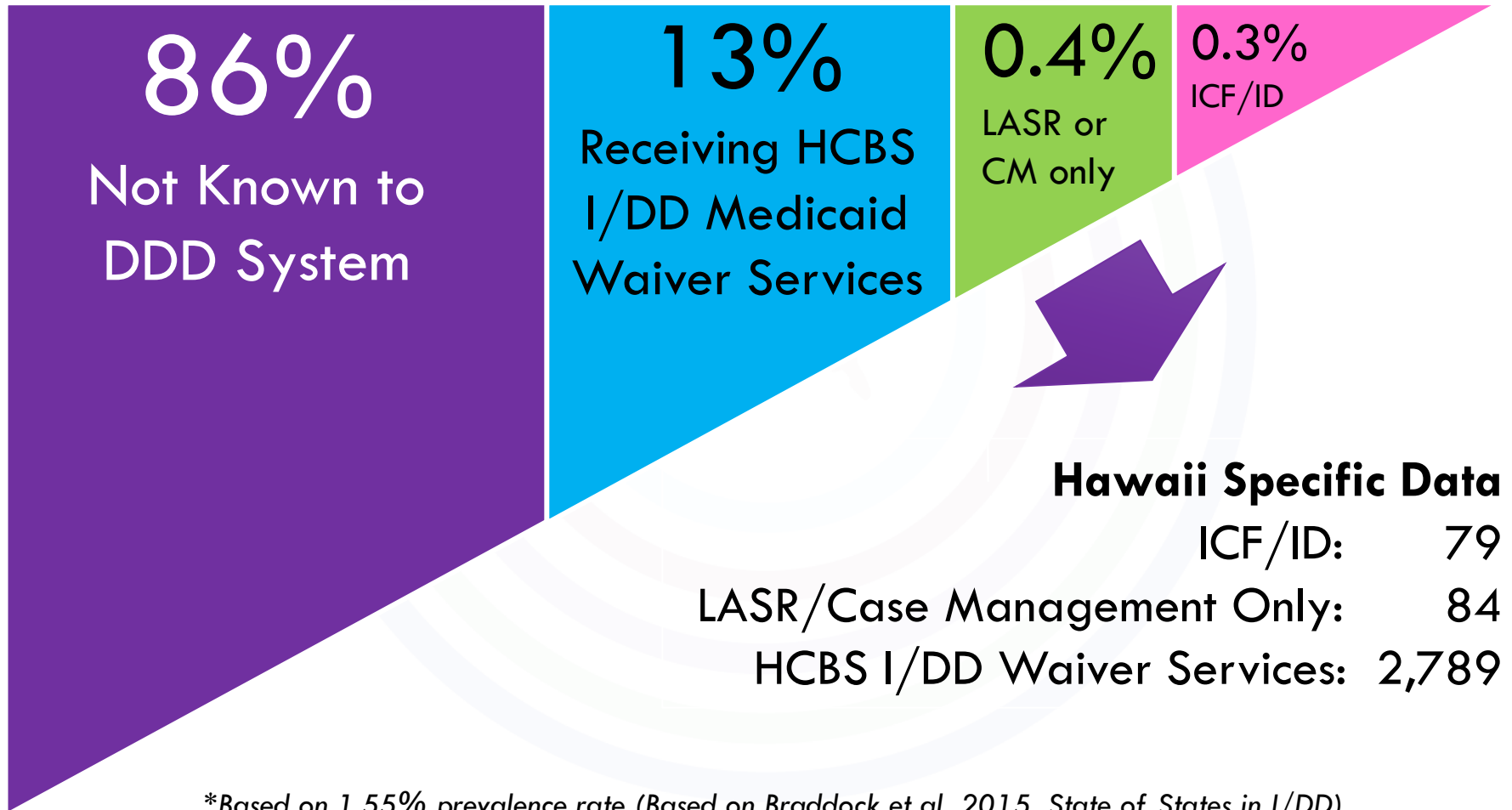
- Unaware of disability specific services
- Do not want disability specific services
- Have a diagnosis but don't meet "eligibility criteria" in state system

*Based on Braddock et al, (2015) State of States in I/DD



Individuals with DD in Hawaii

22,143 estimated people with developmental disabilities in Hawaii*



Hawaii Specific Data

ICF/ID:	79
LASR/Case Management Only:	84
HCBS I/DD Waiver Services:	2,789

**Based on 1.55% prevalence rate (Based on Braddock et al, 2015, State of States in I/DD) with HI population of 1,428,557 citizens (US Census Bureau, Population Division, 2016)*



Supporting Families LifeCourse Framework

Guiding Principle #2

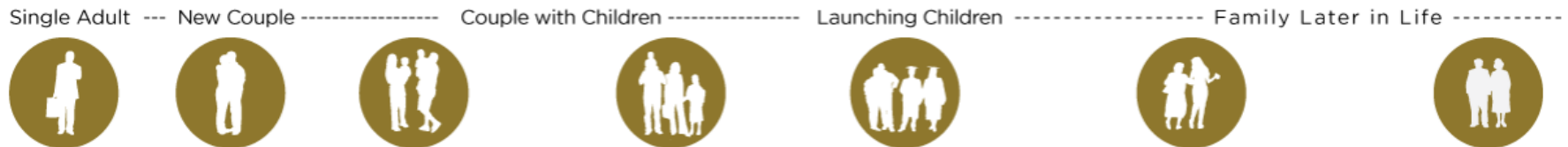
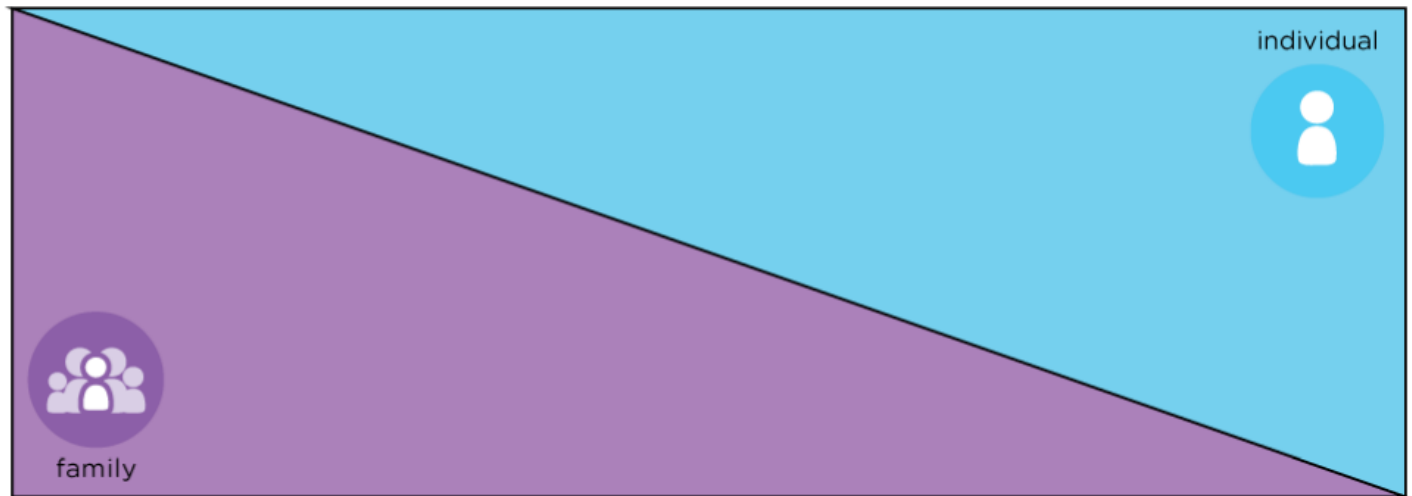


Family Systems and Cycles



Individual and Family Life Cycles

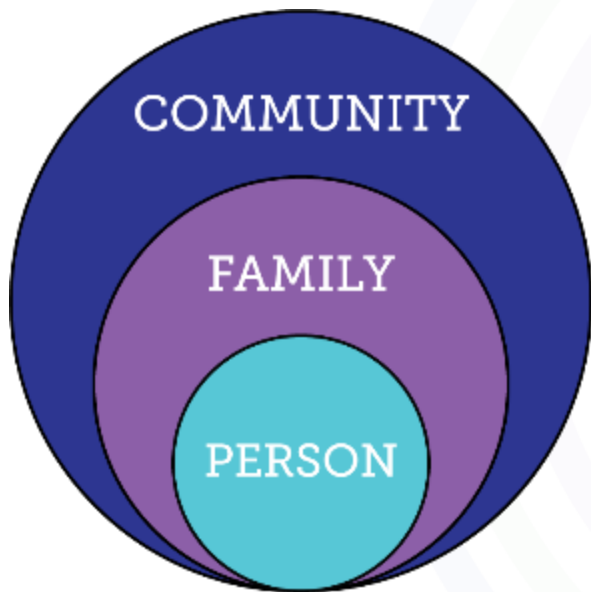
Individual Life Cycle



Family Life Cycle



Services and Supports are Evolving



Everyone exists within the context of family and community



Traditional Disability Services



Integrated Services and Supports within context of person, family and community



Supporting Families LifeCourse Framework

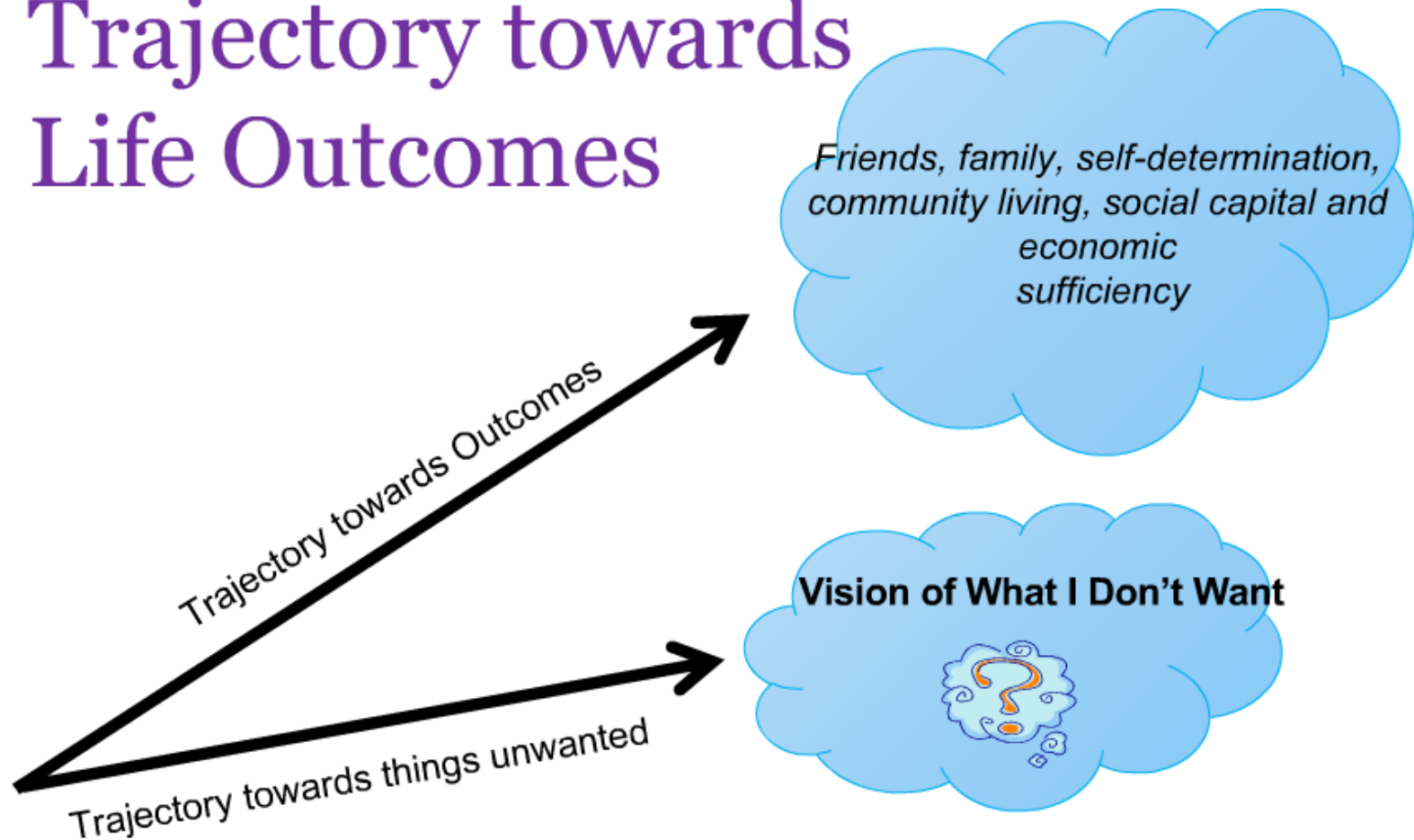
Guiding Principle #3



Life Outcomes



Trajectory towards Life Outcomes



*Both in practice with individuals and
in policy changes for systems*



Supporting Families LifeCourse Framework







Guiding Principle #4



Life Domains



Life Domains

 <p>Daily Life & Employment</p>	<p>What a person does as part of everyday life:</p> <ul style="list-style-type: none"> • School • Volunteering • Routines • Life skills 	 <p>Healthy Living</p>	<p>Managing and accessing health care & staying well:</p> <ul style="list-style-type: none"> • Medical • Mental health • Behavioral health • Wellness and nutrition
 <p>Community Living</p>	<p>Where and how someone lives:</p> <ul style="list-style-type: none"> • Housing and living options • Community access • Transportation • Home adaptations 	 <p>Safety & Security</p>	<p>Staying safe and secure:</p> <ul style="list-style-type: none"> • Emergencies • Guardianship options and alternatives • Legal rights and issues
 <p>Social & Spirituality</p>	<ul style="list-style-type: none"> • Social networks and natural supports: • Friendships & relationships • Leisure activities • Social valued roles • Faith community 	 <p>Citizenship & Advocacy</p>	<p>Having choice and self-determination:</p> <ul style="list-style-type: none"> • Setting goals • Taking responsibility • Having voice heard • Voting & civic engagement



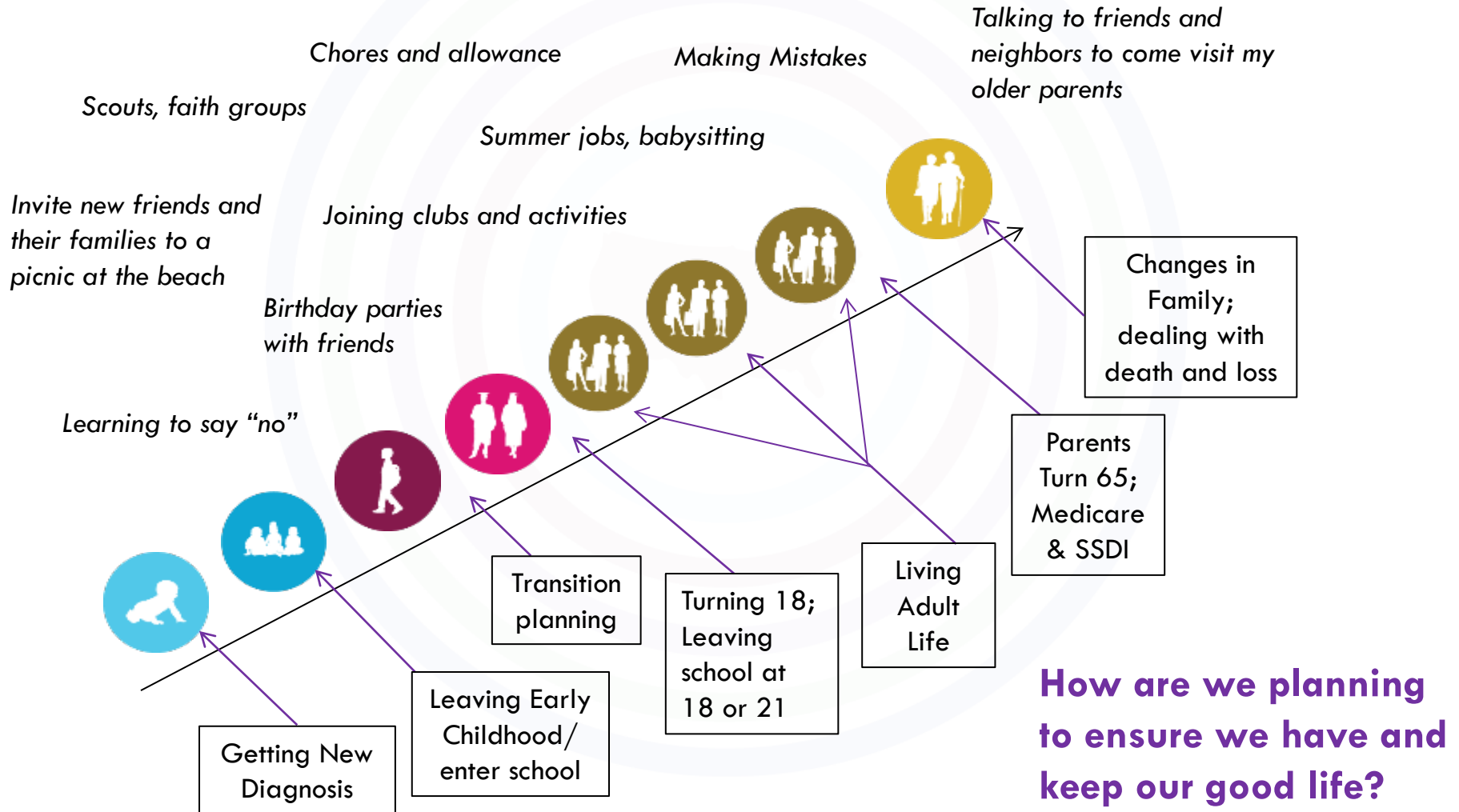
Supporting Families LifeCourse Framework

Guiding Principle #5

Life Stages and Trajectory



Focusing on Life Experiences and Life Transitions



Supporting Families LifeCourse Framework

Guiding Principle #6



**Individual and
Family Supports**



“Buckets of Support”



◎ **Discovery and Navigation**

- ★ Information
- ★ Education
- ★ Skill building and training

◎ **Connecting and Networking**

- ★ Peer support

◎ **Goods and Services**

- ★ Daily living
- ★ Financial support



Supporting Families LifeCourse Framework

Guiding Principle #7

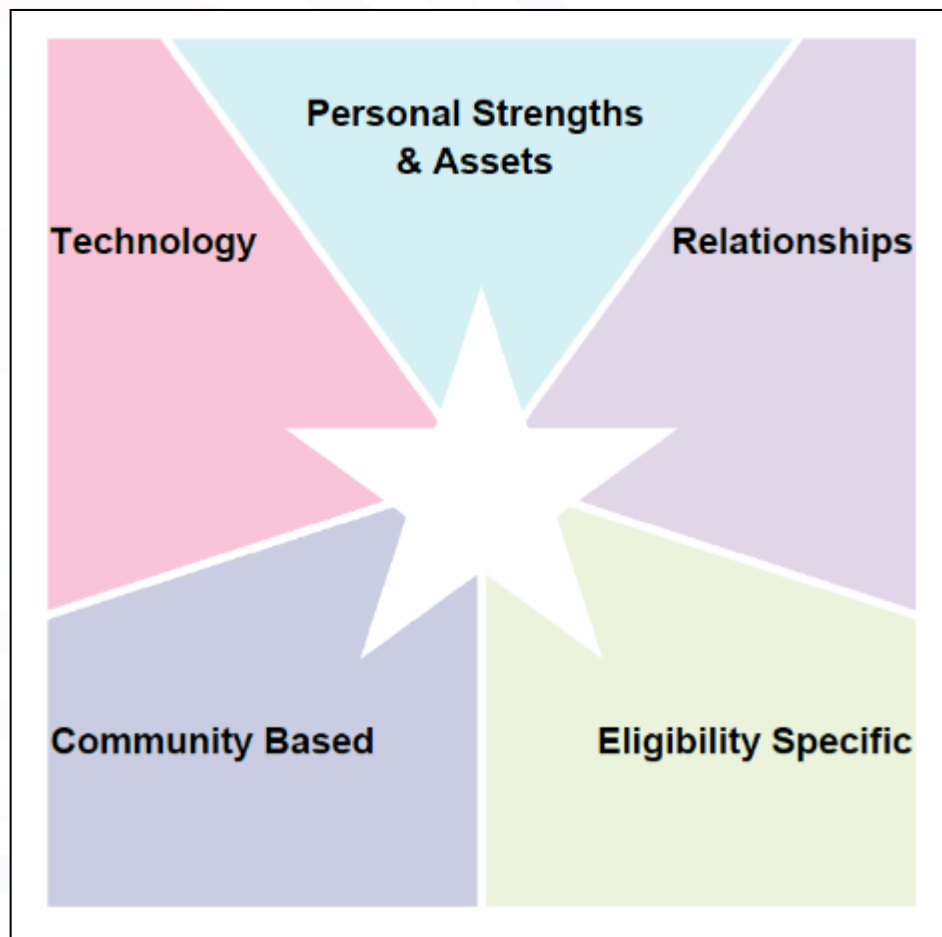


**Integrated
Delivery of
Supports**



Integrated Supports Star

- © Helps to reframe the conversation about natural supports
 - ★ Are we looking at all the types of supports that may be available?
 - ★ Are we leveraging our resources effectively?
 - ★ Do we really know what types of supports are needed?



Supporting Families LifeCourse Framework

Guiding Principle #8

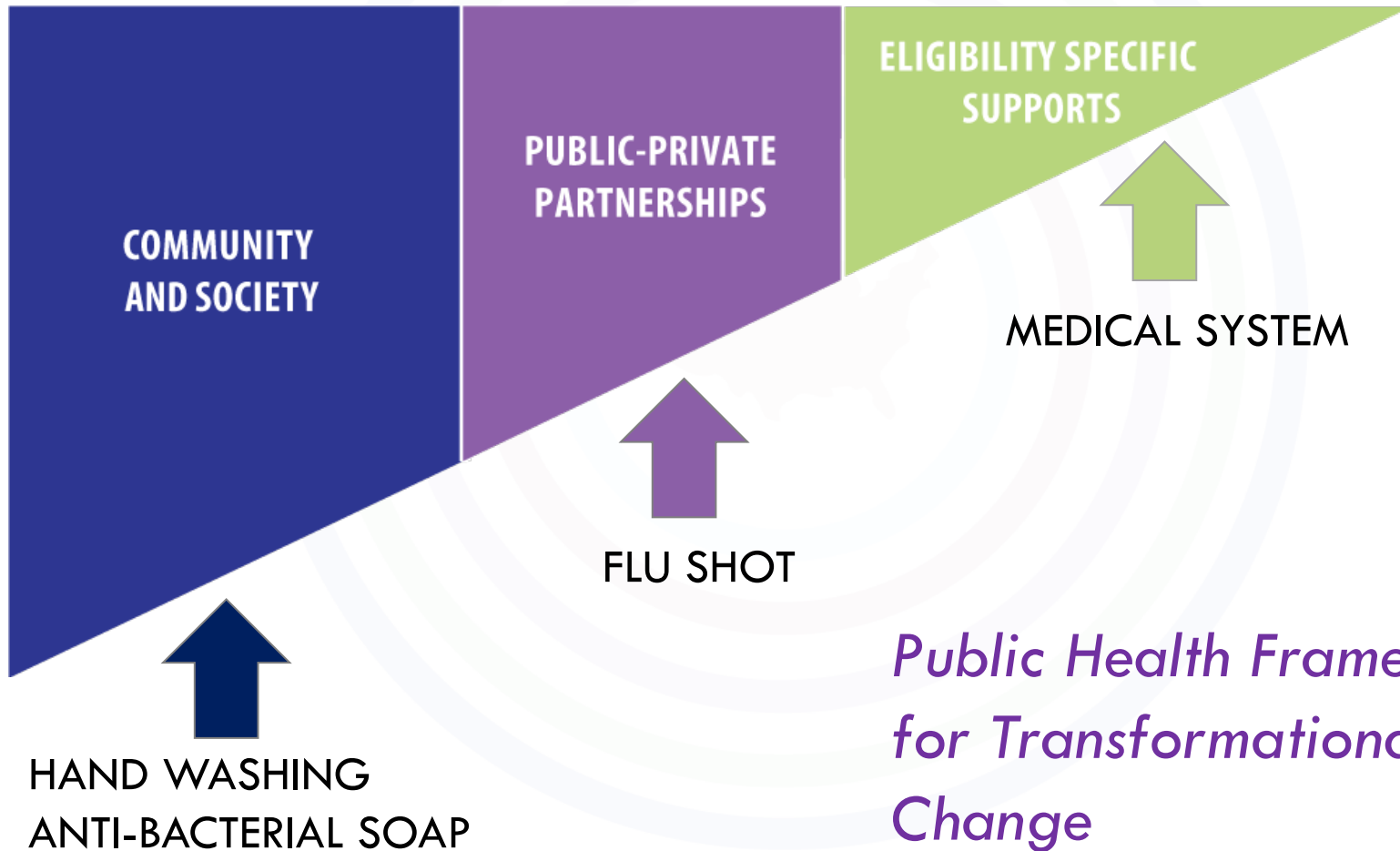


**Policy &
Systems**



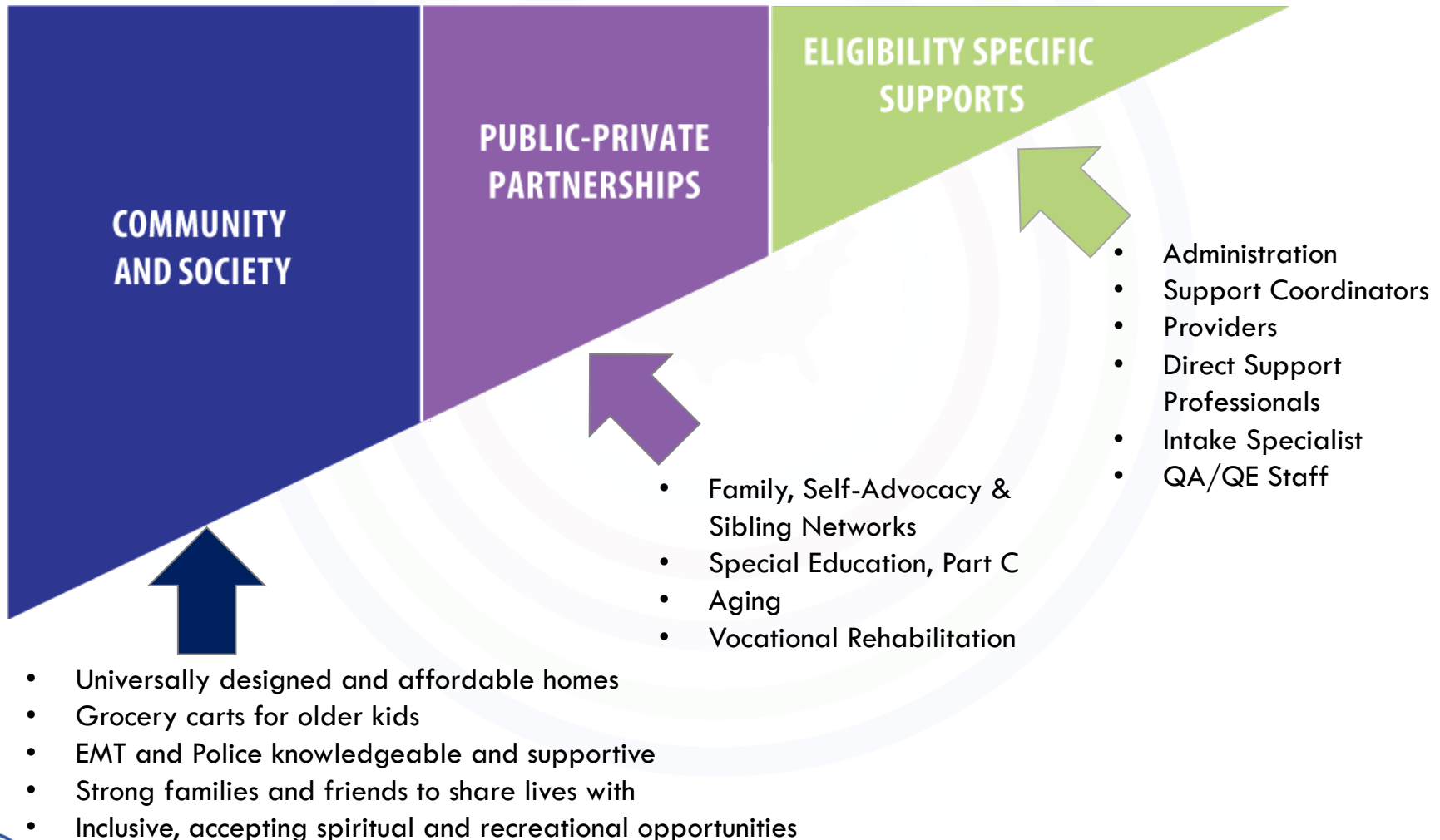
LifeCourse Universal Strategy

Using the ALL to create strategies for change

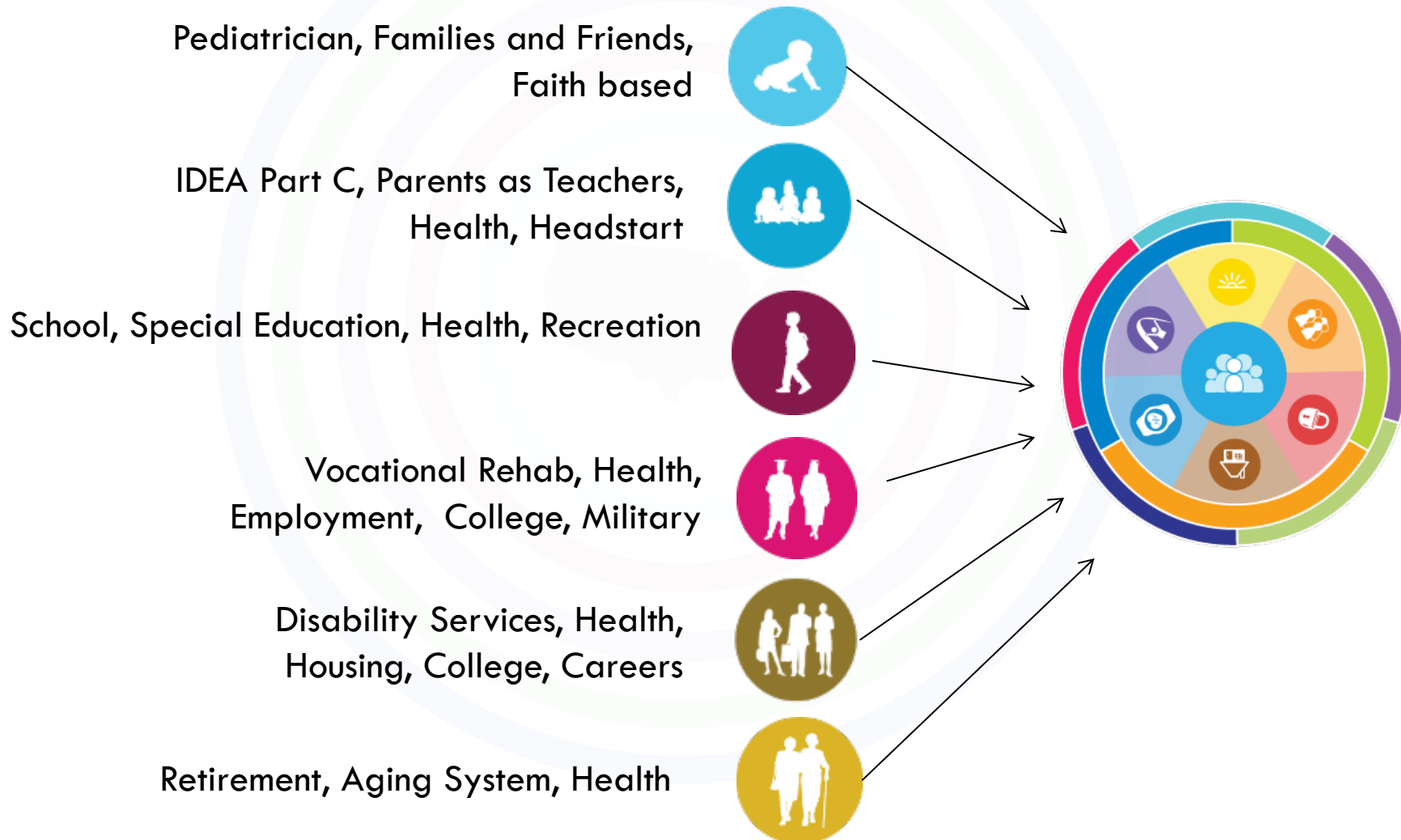


LifeCourse Universal Strategy

Applying the Framework to Transformational Change

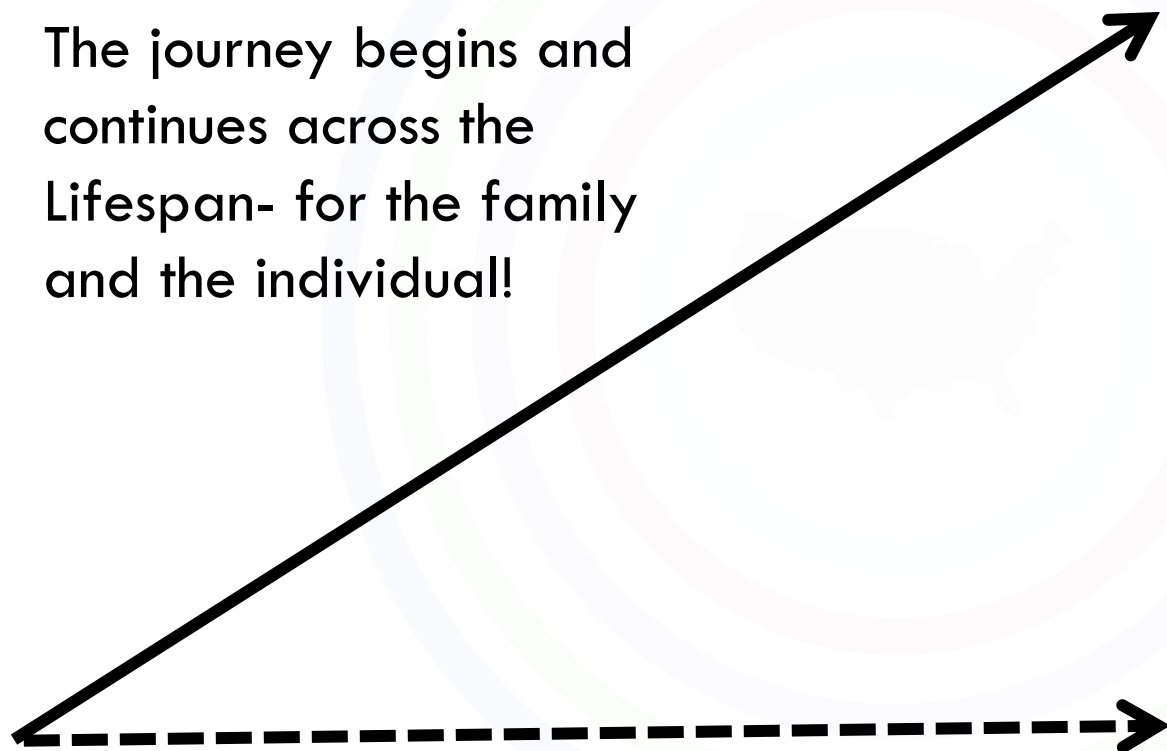


Comprehensive, Integrated & Coordinated Systems Across Life Domains & Stages



Person Centered Approaches MUST Include Supporting Families

The journey begins and continues across the Lifespan- for the family and the individual!



What We Want in Hawaii

Families in Hawaii are supported to build strong foundations for a good life for their family members.

What We DON'T Want in Hawaii

Systems create or maintain barriers to a good life for individuals and families.



OHANA

means family.

Family means nobody gets left behind or forgotten.



DOH DDD Training Unit

E-mail: DOH.dddtraining@doh.Hawaii.gov

