

Mid-Semester IEP Check In

As first quarter fast approaches, now is a good time to check in and make sure your child's IEP is being followed appropriately. If you find discrepancies, contact your child's teacher for a chat, reach out to your school administrator, and if things still are not going smoothly, call an IEP Team meeting to try and resolve the issue.

Check in with the Teacher

Parent/Teacher conferences are great for check-ins, but if you need more time, schedule a separate meeting to discuss concerns, student feedback and how to move forward.



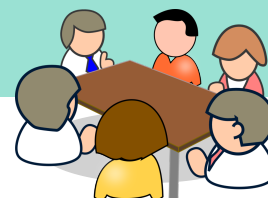
Contact Your IEP Coordinator

If you think the IEP is not being followed, be proactive and contact your child's IEP Care Coordinator and give them the chance to make it right. Be friendly but firm.



Call a New IEP Meeting

If things still haven't improved, don't wait for the next annual meeting; you can call a team meeting to discuss how to make improvements to your child's learning.



Know Your Child's Schedule

Know whether your child is being pulled out or worked with and when it is happening. Make sure they are not missing important core curriculum instruction that could set them back on their learning.



Read the Progress Reports

Progress Reports usually come out with the quarterly grades. Know when to expect them, and read through them to make sure the IEP goals are moving forward. If you have concerns, jot them down and call the teacher.



Watch, Listen & Follow Up

Watch for homework and assignments to make sure any accommodations are being followed. Listen to your keiki, if they express concerns about their learning and follow up quickly when you see a potential problem.

