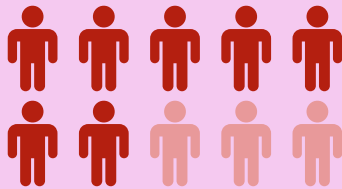




# OCTOBER IS BULLYING PREVENTION MONTH

Learn how Hawai'i middle school and high school students with disabilities are at high risk for bullying.

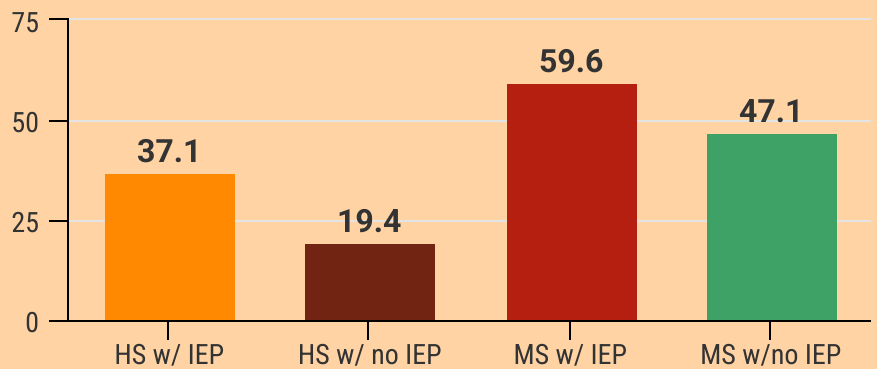
The **Hawai'i Youth Risk Behavior Survey (HYRBS)** is the Center for Disease Control and Prevention's survey given to students 12-18 years old every two years. It collects valuable data about a student's exposure to bullying and cyberbullying that can be compared across gender, race, ethnicity and, beginning in 2021, disability status. This infographic reflects the most recent survey data (2023) comparing special education students to general education students.



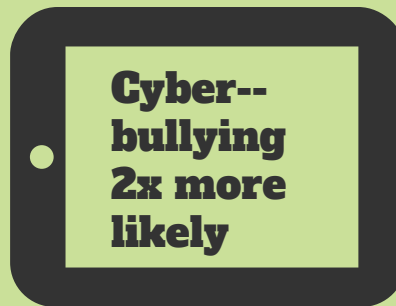
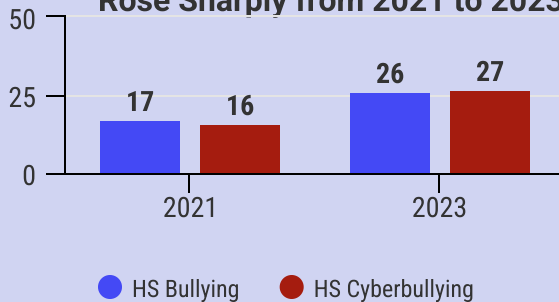
**70%**

of Middle Schoolers (MS) with IEPs said bullying was a problem at school.

## % Bullied/cyberbullied within last 12 months



## Rates for HS Students with IEPs Rose Sharply from 2021 to 2023



26.6% for high school students with IEPs vs. 12.2% for high school students without IEPs

**17%** of high schoolers with IEPs did not attend school on one or more days in the last 30 days because it felt unsafe at school or on the way to and from school.



**20.4%** of middle schoolers with IEPs did not attend school on one or more days in the last 30 days because it felt unsafe at school or on the way to and from school.



Report Source: "Bullying Among Students who Did and Did Not Receive Special Education Services in Hawai'i for the years 2021 and 2023", Hawai'i Health Data Warehouse  
Data Source: Departments of Health and Education, 2023 Hawai'i Youth Risk Behavior Survey



SPIN News  
October 2025